



GALEON 500 FLY 2017



THIS IS THE ACTUAL BOAT



THIS IS THE ACTUAL BOAT

GALEON 500 FLY 2017



www.royalyachting.ae

YACHT FOR SALE | GALEON 500 FLY 2017

| | |
|------------------------|--------------|
| BUILDER: | GALEON |
| BUILT: | 2017 |
| LENGTH OVERALL: | 16.20 METERS |
| BEAM: | 4.40 METERS |
| DRAFT: | 1 METERS |
| STATEROOMS: | 3 CABINS |
| GUESTS: | 6 BERTHS |
| FLAG: | UAE |
| HULL MATERIAL: | GRP |

PRICE NOW: 3,200,000 AED

~~PRICE WAS: 4,150,000 AED~~

FOR MORE INFORMATION CONTACT ROYAL YACHTING



+971 (0) 4 399 6399



+971 (0) 50 467 4113 / Sales Manager



www.royalyachting.ae



BOAT DETAILS

| | |
|------------------------|-----------------|
| Type of Boat : | Fly Bridge |
| Boat Builder : | Galeon |
| Model : | 500 Fly |
| Year : | 2017 |
| Hull Material : | GRP |
| Length Overall : | 16.20 Meters |
| Beam : | 4.40 Meters |
| Draft : | 1 Meters |
| Displacement : | 24.52 Ton |
| Fuel Capacity : | 2 x 238 Gallons |
| Fresh Water Capacity : | 172 Gallons |
| Location : | UAE |

MECHANICAL DETAILS

| | |
|---------------------|----------------------|
| Engine : | Volvo Penta |
| Engine Power : | 2 x 600 HP |
| Engine Hours : | 1300 Hours |
| Fuel Type : | Diesel |
| Propulsion : | Shaft Drive |
| Maximum Speed : | 28 knots |
| Cruising Speed : | 26 knots |
| Generator : | Yes |
| Generator Details : | FISCHER PANDA 15 KVA |
| Air Conditioning : | Yes |
| Aircon Power : | 56000 BTU |
| Battery Charger : | Yes |
| Shore Power : | Yes |

ELECTRONICS

| | |
|-----------------|-----|
| Compass : | Yes |
| Heel Repeater : | Yes |
| Chartplotter : | Yes |
| GPS : | Yes |
| Autopilot : | Yes |
| Radar : | Yes |
| VHF : | Yes |
| Sound System : | Yes |
| TV/DVD : | Yes |

ACCESSORIES

| | |
|-------------------|-----|
| Helipad : | No |
| Bimini Top : | Yes |
| Cockpit table : | Yes |
| Windlass : | Yes |
| Trim Tabs : | Yes |
| Bow thruster : | Yes |
| Stern Thruster : | Yes |
| Joystick : | Yes |
| Gangway : | Yes |
| Platform : | Yes |
| Swimming Ladder : | Yes |
| Teak Flooring : | Yes |
| Sundeck : | Yes |

EQUIPMENTS

| | |
|----------------------|-----|
| BBQ Grill : | Yes |
| Black Water : | Yes |
| Water Heater : | Yes |
| Washing Machine : | Yes |
| Oven : | Yes |
| Microwave : | Yes |
| Fridge : | Yes |
| Freezer(s) : | Yes |
| Ice Maker : | Yes |
| Under Water Lights : | Yes |

LAYOUT

| | |
|--------------------|-----|
| Main Saloon : | Yes |
| Number of Cabins : | 3 |
| Number of berths : | 6 |
| Number of Heads : | 3 |

COMMENTS : The boat is in good and satisfactory condition. The boat is equipped with a tender garage.

DISCLAIMER : In this transaction we are acting as Brokers only. Whilst every care has been taken in their preparation, the correctness of these particulars is not guaranteed. The particulars are intended as a guide only and they do not constitute a term of any contract. A prospective buyer is strongly advised to check the particulars and where appropriate to have the vessel fully surveyed and inspected.

DESCRIPTION:

- ENGINES VOLVO PENTA 2 X D8-600
- EXCLUSIVE MODIFIED WALNUT CARAVAGIO - HIGH GLOSS PAINT
- BEACH MODE PACKAGE - FOLDABLE AFT BALCONIES AND SLIDING OPENABLE AFT SIDE WINDOWS, CONVERTIBLE BAR AREA IN SIDE COCKPIT.
- CAROUSEL MODE PACKAGE - HYDRAULIC TENDER GARAGE WITH ROTATING AFT SEAT AND GRILL AREA.
- HYDRAULIC BATHPLATFORM WITH TEAK - 500KG LIFTING CAPACITY.
- FIXED SOFA WITH SUN DECK ON BOW DECK.
- TRIM TABS INSTALLATION WITH INDICATORS □ HYDRAULIC STEERING
- COMPLETE WASTE SYSTEM WITH ELECTRIC PUMPS
- THREE SEGMENT SLIDING ENTRANCE DOORS
- PANORAMIC SIDE WINDOW (STARBOARD SIDE) ELECTRICALLY DRIVEN UP/DOWN
- WATER HEATER (60L)
- FRONT WINDOWS HEATING
- BOW ANCHOR WINCH
- GALVANIZED ANCHOR AND CHAIN
- AIR CONDITIONING SYSTEM (56000 BTU - CHILLED WATER) WITH HEATING INVERTER
- GENERATOR FISCHER PANDA 15000i (variable rpm model)
- BOWTHRUSTER WITH JOYSTICK
- STERN THRUSTER WITH JOYSTICK
- OVEN COMBO (GRILL+ MICROWAVE FUNCTION)
- REFRIGERATOR IN GALLEY (165L)
- SHOWER IN BATHROOM
- ALUMINIUM SHUTTERS IN CABINS
- WOODEN FLOOR IN GALLEY
- LED CEILING LIGHTS ON WHOLE BOAT
- REFRIGERATOR ON FLYBRIDGE (49L)
- FIBERGLASS FOLDABLE TABLE ON FLYBRIDGE
- TEAK ON BATHPLATFORM
- TEAK ON STEPS TO FLYBRIDGE
- SHOWER ON BATHPLATFORM
- FRONT WINDOWS WASHING SYSTEM
- COVER FOR FLYBRIDGE STEERING CONSOLE
- COVER FOR TABLE ON FLYBRIDGE
- COVERS FOR FRONT WINDOW AND SIDE WINDOWS
- MANUAL FOLDABLE SOFT BIMINI TOP
- BATTERY CHARGER

- RAYMARINE i70 INSTRUMENT (MAIN STATION)
- RUDDER INDICATOR
- RAYMARINE CHARTPLOTTER/FF 1XA127-EU AND 1XA125 WITH TRANSDUCER AND DIGITAL RADAR RD424 HD
- UPGRADED FUSION SOUND SYSTEM WITH DVD PLAYER AND AMPLIFIER (4/2/2 SPEAKERS IN SALOON/COCKPIT/FLYBRIDGE)
- TV PREINSTALLATION FOR SALON WITH SLIDING MECHANISM
- TV PREPARATION W/O MECHANISM BOW AND MASTER CABIN
- YACHT CONTROLLER (REMOTE CONTROL- DUAL BAND)
- EXCLUSIVE ENLIGHTED BEDHEAD IN MASTER CABIN
- DECORATIVE BED COVERS AND PILOWS
- UPPER CABINETS IN SALOON
- ICE MAKER ON FLYBRIDGE INSTEAD OF STD REFRIGERATOR ON FLY
- ELECTRIC GRILL ON AFT DECK (ONLY WITH ROTATING AFT SEAT OPTION)
- FIBERGLASS LOWERABLE TABLE IN AFT COCKPIT
- UNDERWATER LED LIGHTS (4pcs -port side, 4pcs-starboard, 4pcs-stern)
- HYDRAULIC PASARELLE (BOX SYSTEM) PREINSTALLATION
- REAR VIEW CAMERA
- RAYMARINE AUTOPILOT EV-1 ACU200 WITH 2XP70R CONTROL UNIT
- WASHER IN MASTER CABIN PREINSTALLATION
- SUBWOOFERS ON FLY and COCKPIT
- EXTERNAL AUDIO SYSTEM
- ADDITIONAL EXTERIOR SOCKETS (BOW, FLY, COCKPI, PLATFORM) 5 pcs
- INTERNAL AUDIO SYSTEM
- ADDITIONAL INTERIOR SOCKETS (MASTER, BOW, GUEST CABINS) 8 pcs
- ADDITIONAL REMOTE IN GALLEY
- BOSE (LIFESTYLE 600) SOUND SYSTEM IN SALOON
- RAYMARINE M232 THERMAL IP CAMERA with SWICH.HS-5
- RAYMARINE VHF 260E AIS AND VHF ANTENNA WITH REPATER ON FLY
- VHF SPEAKER- MARCO ON RADAR ARCH
- LED LIGHTS (COCKPIT, STEPS, FLYBRIDGE)

GALEON 500 FLY 2017 ROYAL YACHTING - <https://www.royalyachting.ae/boats/1182>

YOUTUBE - <https://youtu.be/nq4SlkxVZ4Q>

YACHTWORLD - <https://www.yachtworld.com/yacht/2017-galeon-500-fly-8505943/>

DISCLAIMER : In this transaction we are acting as Brokers only. Whilst every care has been taken in their preparation, the correctness of these particulars is not guaranteed. The particulars are intended as a guide only and they do not constitute a term of any contract. A prospective buyer is strongly advised to check the particulars and where appropriate to have the vessel fully surveyed and inspected.



THIS IS THE ACTUAL BOAT



THIS IS NOT AN ACTUAL BOAT



THIS IS THE ACTUAL BOAT



THIS IS THE ACTUAL BOAT



THIS IS THE ACTUAL BOAT



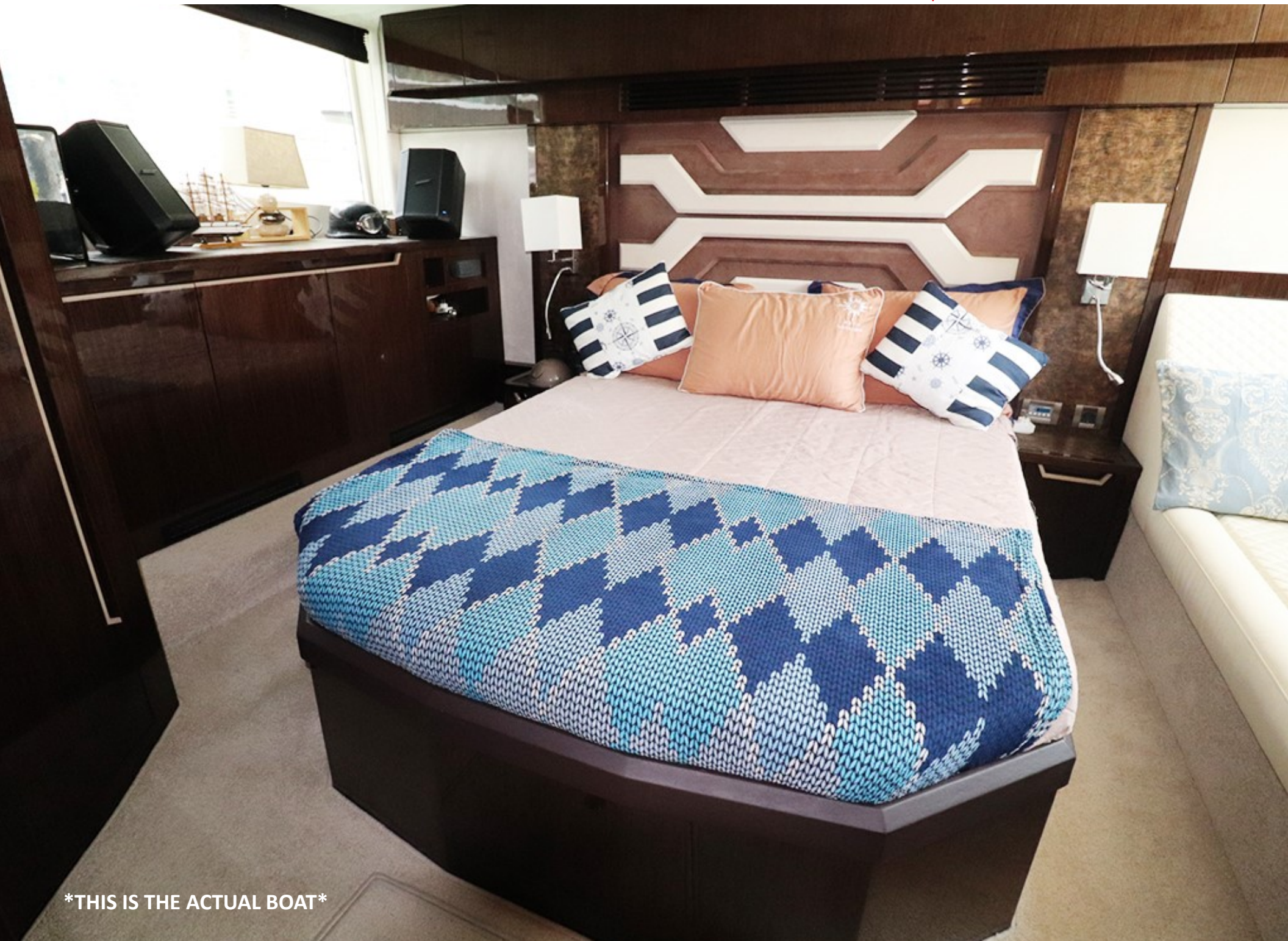
THIS IS THE ACTUAL BOAT



THIS IS THE ACTUAL BOAT



THIS IS THE ACTUAL BOAT



THIS IS THE ACTUAL BOAT



THIS IS THE ACTUAL BOAT



THIS IS THE ACTUAL BOAT



THIS IS THE ACTUAL BOAT



THIS IS THE ACTUAL BOAT



THIS IS THE ACTUAL BOAT



THIS IS THE ACTUAL BOAT



THIS IS THE ACTUAL BOAT



THIS IS THE ACTUAL BOAT